



ORGANIC FACT SHEET

GRASS-FED CERTIFICATION FOR DAIRY & MEAT

QUICK FACTS

- MOSA offers add on Grass-Fed Certification for Dairy and Meat.
- USDA Certification is a base requirement for these Grass-Fed options.
- Grass-Fed Certification allows for additional marketing opportunities.

GRASS-FED MEAT & GRASS-FED DAIRY CERTIFICATIONS

MOSA also offers two optional certification services - Grass-Fed Meat and Grass-Fed Dairy Certification for ruminant livestock producers. The Grass-Fed Meat and Dairy standards, which were created in a joint effort by the certification community and Organic Valley, and will be overseen by Organic Plus Trust (OPT), are available through MOSA.

WHAT IS GRASS-FED CERTIFICATION?

It is a verification service that ensures that dairy and/or meat products are produced without any grain inputs, including supplements. Feed must be forage-based only - no grains are allowed. Complete standards and policies are available from MOSA.

WHO NEEDS GRASS-FED CERTIFICATION?

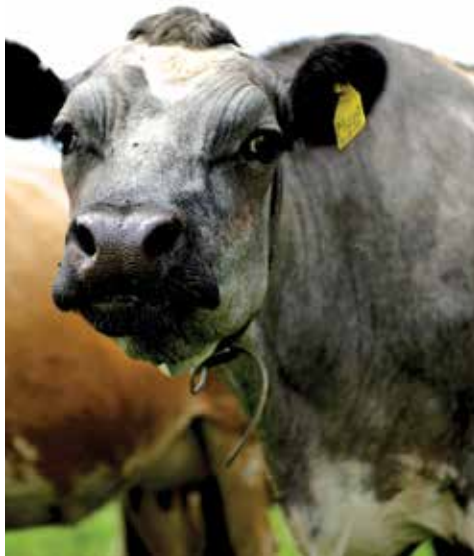
Any certified organic producer with a market that requires grass-fed certification, or wants to strengthen their grass-fed claims to their buyers. You will be able to make the "Certified Grass-Fed" claim on your products, you will receive a unique Grass-Fed Certificate, and for a fee, you may use the Grass-Fed Program Seal on your labeled products.



WHAT WILL IT COST?

This is an optional service with its own certification fee and inspection fee. For certified producers the fees are:

- DAIRY: \$300 CERTIFICATION FEE PLUS ACTUAL INSPECTION FEES**
MEAT: \$300 CERTIFICATION FEE PLUS ACTUAL INSPECTION FEES



MOSA Certified Organic
122 W. Jefferson St.,
Viroqua, WI 54665
phone: 608-637-2526
fax: 608-637-7032

CONTACT mosa@mosaorganic.org
VISIT mosaorganic.org

WHAT SPECIES ARE INCLUDED IN DAIRY & MEAT LIVESTOCK?

Cattle, sheep, and goats can all be certified Grass-Fed with this certification.

WILL MOSA GRASS-FED CERTIFY FARMS CERTIFIED ORGANIC BY ANOTHER ORGANIC CERTIFICATION AGENCY?

Yes. We will certify clients certified as organic by any Accredited Certifier to the OPT Grass-Fed program.

DO I NEED TO MANAGE MY YOUNGSTOCK AND DRY COWS UNDER THE GRASS-FED STANDARD?

Yes, All dairy animals on the operation (or single site) must be managed under this standard.

IS 150 DAYS THE ABSOLUTE MINIMUM DAYS THAT I CAN GRAZE MY ANIMALS?

Yes, The organic standard requires at minimum 120, and this standard requires 150 days. However grazing does not have to be continuous. Animals may be confined for the reasons allowed under the organic standard, and for the time periods in the NOS. The grazing period for the herd may not drop below 150 days.

WHAT IS THE DMI REQUIREMENT FROM PASTURE?

60% of DMI must be from pasture during the grazing season.

CAN I USE ANY GRAIN PRODUCTS?

No, this Standard excludes all grain and grain-derived feed and feed products.

WHAT NON-GRAIN FEEDSTUFFS CAN I USE?

Harvested forages and harvested vegetative-stage cereal grain crops (corn in a pre-tassel stage, soybeans prior to bloom; small and cereal grains prior to boot stage).



CAN I USE FEED SUPPLEMENTS IF THEY ARE GRAIN-FREE?

Yes, A weaned animal's diet may be supplemented when necessary to maintain nutritional stability and optimal rumen welfare with the following plant-based feedstuffs: stored forage in cube or pellet form with a daily limit of not more than .5% of an animal's body weight, and certified organic kelp, beet and citrus pulp, certified organic sugar cane and liquid molasses provided it is strictly limited to supplemental amounts.

DO ALL ANIMALS ON THE OPERATION NEED TO BE MANAGED ACCORDING TO THE GRASS-FED STANDARD?

No, it is permissible to have OPT dairy and nonOPT beef, or some OPT beef and nonOPT beef or other types of animals. Dairy animals all must be managed to OPT Grass-Fed standards but other species do not.

HOW DO I GET MORE INFORMATION AND APPLICATION MATERIALS?

For current MOSA clients there is a Grass-Fed checkbox on your Annual Update Form. Simply check the box and we will send you additional information.

If you are a new applicant, simply call or email MOSA to request the application materials, or with your questions about the program.

